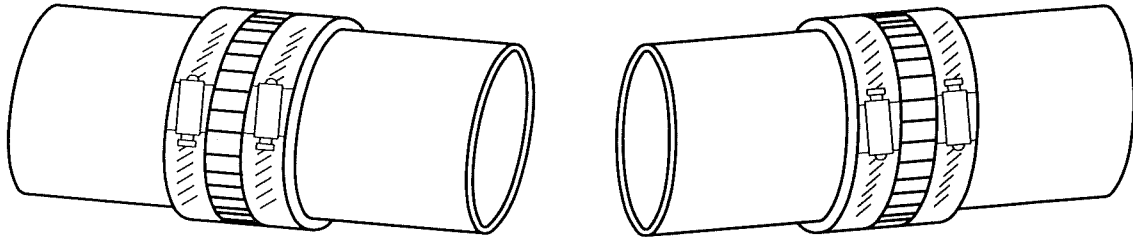


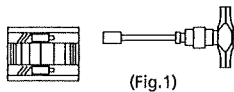
BIBBY-STE-CROIX

Method of Assembly

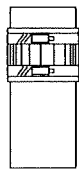
Series 2000 and Slip-on Couplings



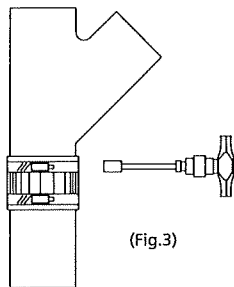
The joint consists of a specially designed elastomer sleeve which fits over the end of the pipe or fitting and is clamped to the pipe or fitting with separate stainless steel screw clamps. The 2000 Series elastomer sleeve has a corrugated stainless steel sheath, whereas in the Slip-on Series the elastomer sleeve is specially designed in respect to shape and strength to fulfill all the requirements of its intended use without the extra sheath.



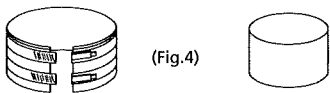
(Fig.1)



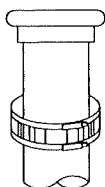
(Fig.2)



(Fig.3)



(Fig.4)



(Fig.5)

IMPORTANT – Retighten all joints when installation is completed.

Assembly

Method (1) for most installations using Slip-on or 2000 Series

- (1) Spread the clamps a few notches if necessary (Fig. 1).
- (2) Fit the elastomer sleeve over the end of the pipe or fitting so that the centre rib butts against the end of the pipe or fittings (Fig. 2).
- (3) Fit the pipe or fitting into the elastomer sleeve. A partial turn while entering will assist assembly.
- (4) Torque the screws as described on page 12 (Fig. 3).

Method (2) for confined spaces using 2000 Series

- (1) Spread the clamp a few notches (Fig. 1).
- (2) Fit the elastomer sleeve over the end of the pipe or fitting so that the centre rib butts against the end of the pipe or fittings (Fig. 2).
- (3) Tighten the clamp slightly over the first pipe.
- (4) Place the second pipe or fitting into the elastomer sleeve. A partial turn, or if cutting into an existing line, a marrying action will assist assembly.
- (5) Torque the screws as described on page 12 (Fig. 3).

Method (3) for confined spaces or cutting into an existing line using 2000 Series

- (1) Separate the stainless steel sub-assembly (i.e. the corrugated sheath and clamps) from the elastomer sleeve (Fig. 4).
- (2) Place the stainless steel sub-assembly over the pipe or fitting in readiness for assembly later (Fig. 5).
- (3) Fit the elastomer sleeve over the end of the pipe or fitting so that the centre rib butts against the end of the pipe or fitting.
- (4) Roll the protruding end of the elastomer sleeve over itself until the centre rib is exposed (Fig. 5).
- (5) Position the second pipe or fitting against this centre rib and unroll the elastomer sleeve over this pipe or fitting.
- (6) Slide the stainless steel sub-assembly into a centred position over the elastomer and torque the screws as described on page 12 (Fig. 3).